



Data Metallogenica e-newsletter

the worlds most comprehensive and representative repository of mineral deposit data

No 3

Over the past 6 years, AMIRA International with the help of over 100 sponsors (mining companies, government organisations and professional societies) from around the globe has been building the foundations of a community world encyclopaedia of ore deposits through its project *Data Metallogenica* (www.datametallogenica.com). There is already an impressive amount of material available on the website (over 6 gigabytes), much of it unique, which is being continuously augmented with new material.

Recent releases added to the website to support the thousands of files previously available include:

Carrapateena – a significant new copper-gold discovery in South Australia

This exciting new copper-gold discovery under cover by a small privately owned company RMG Services has aroused strong renewed interest for IOCG mineralisation on the Gawler Craton in South Australia. The discovery was made with the assistance of collaborative drill funding provided by the South Australian Government's PACE program aimed at encouraging exploration in that state (http://www.pir.sa.gov.au/pages/minerals/initiatives/pace/pace_summary.htm).

The initial intersection in the second hole in July 2005 included 67 metres at 3.03% copper and 0.4 grams per tonne gold in a 185m mineralised interval (minimum). The discovery is in the same region as the Olympic Dam and Prominent Hill deposits.

Photographs of the core, together with key geophysical data, are displayed in a new data gallery in Data Metallogenica. These can be compared with extensive data sets from both Olympic Dam and Prominent Hill.

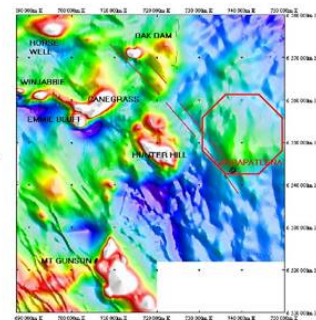
This material, as well as information from many other significant IOCG mineral deposits from around the world, is available on the Data Metallogenica website.



Multi-lithic haematite breccia with clasts of bornite circled

Carrapateena

- Structural setting very similar to Olympic Dam and Prominent Hill
- Re-activated "Karraran Orogeny" 1580 Ma and later conjugate contractional structures with localised extensional zones
- And localises "pop-ups" resulting in rapid variations in depth to basement



New Thesis Database

Increasing numbers of university theses are being offered to Data Metallogenica, and we are currently assessing the best means of display on-line. In the meantime, a separate AMIRA proposal (P874) is on circulation for sponsorship – the aim is to develop an Australian thesis database, including short summaries of each thesis. This neglected data resource will become easily accessed via the Internet, providing a valuable information resource for all exploration and mining companies in Australia, as well as researchers around the world.

For further information - http://www.datametallogenica.com/pages/thesispages/P874_intro.htm

First Data From the Middle East

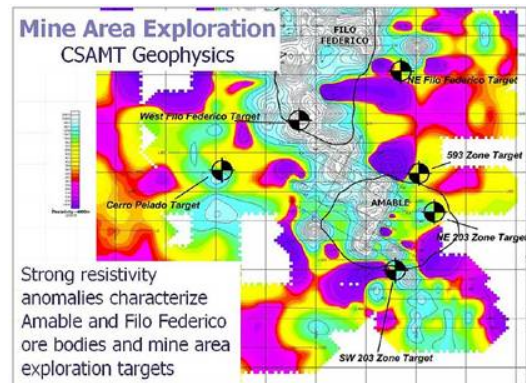
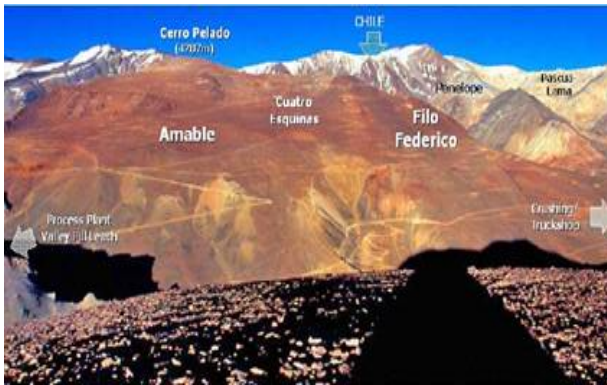
With the generous assistance of Rio Tinto, a comprehensive suite of representative samples and supporting data from the Sar Cheshmeh porphyry copper deposit in Iran are now on display in DM. In addition, a substantial data gallery on the giant new Mehdiabad zinc deposit in Iran has been provided by Union Resources, together with information provided by Tethyan Copper on the important new Reko Diq porphyry copper deposit in Pakistan.

Gold in Latin America

Large new data galleries have been recently loaded on the Data Metallogenica website for many major gold deposits in Latin America from material provided by the operating companies Placer, Barrick and AngloGold. These include Pueblo Viejo (Dominican Republic), Alto Chicama (Peru), Veladero and Cerro Vanguardia (Argentina) and Crixas and Morro Velho (Brazil). These join previous galleries from Yanacocha, Pierina and Morro do Ouro; many of these deposits also have high quality photographs of representative samples available on the website. New galleries are also currently being prepared for deposits such as Pascua Lama, La Coipa and Cerro Casale.

In addition existing or new data galleries and sample photographs are available for major Andean copper deposits such as Escondida, Rio Blanco and Antamina.

This material, as well as information from over 200 other mineral deposits from South America, is available on the Data Metallogenica website.



For further information on other recent additions please visit:

http://www.datametallogenica.com/dm_frames.asp?framefile=news_page.htm or
http://www.datametallogenica.com/dm_frames.asp?framefile=../dbtw-wpd/textbase/dm_publicsearch/staticpublic_dm.htm (click on New Data Galleries)

This is a great start but there is a huge amount still to do.

DM is not-for-profit but must be self-funding. Your support is essential for the continued growth of DM.

Please consider:

- Becoming a web subscriber (http://www.datametallogenica.com/dm_frames.asp?framefile=new_subscribers.htm), or
- Becoming a sponsor (http://www.datametallogenica.com/dm_frames.asp?framefile=new_sponsors.htm).

Apart from providing the necessary financial support for continued growth, your involvement will give you and your colleagues unlimited access from virtually anywhere in the world to a great and growing unique database of continuous value.

The primary objectives of *Data Metallogenica* are to be:

- A primary web portal for "high-level" information on global ore deposits.
- An information source and rock reference base for experienced geologists, analysts and regulators.
- A training resource for younger geologists in companies.
- An education and research resource for students and teachers at universities.
- A permanent and easily accessible repository of much "fragile" and transient data held by individuals and companies – an ultimate world encyclopaedia of mineral deposits.
- A fast integrated link to detailed and supporting quality data sets elsewhere, including commercial providers, government surveys and university research groups.

We would welcome your support in becoming part of this great enterprise. The cost is surprisingly low at about \$1 – 2 per week per geoscientist.

Please circulate this email to your colleagues and friends.

Alan Goode
Project Director, Data Metallogenica
AMIRA International (www.amira.com.au)
Level 2, 271 William Street
Melbourne VIC 3000
Australia

Ph: +61 3 8636 9957
Fax: +61 3 8636 9900
Email: alan.goode@amira.com.au



An archive of past data releases is available on the DM website.

Data Metallogenica – building the global encyclopaedia of ore deposits