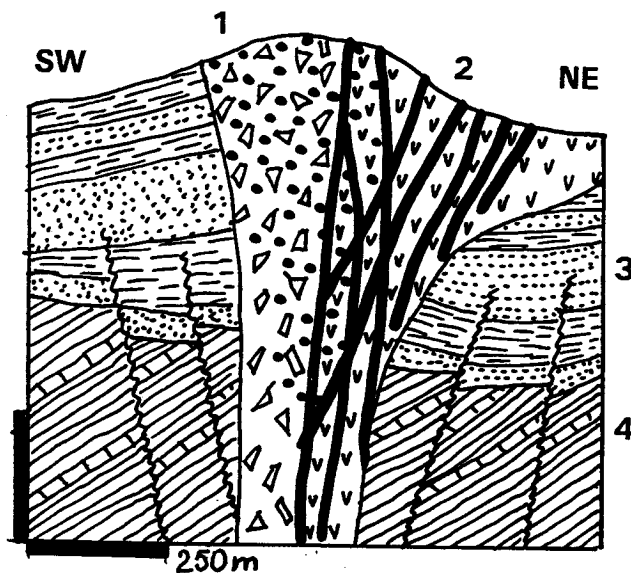


LT 2080 ROȘIA MONTANĂ Au-Ag, APUSENI MTS, ROMANIA



ROȘIA MONTANĂ CROSS-SECTION after Borcos and Ghitulescu (1969) in Ianovici et al. (1976)		
1	Mi-Pl vent filled by hydrothermally altered breccia fringed by a rim of hydraulic ? breccia in the wallrocks mineralized by low-grade disseminated auriferous sulphides (mainly pyrite)	
2	Mi-Pl epithermal fissure veins grading to stockworks in altered subvolcanic quartz-phyric dacite plug	
3	Mi volcanoclastics: volcarenite alternating with siltstone and mudstone	
4	Cr marine sediments, black shale interbedded with occasional dark limestone beds	
LT 2080 ROȘIA MONTANĂ LEGEND		
ORE	Epithermal veins: rhodochrosite bands in Mn oxides pigmented fault breccia; auriferous quartz veinlets, Ag-galena, sphalerite	1, 2
2	slightly silicified dacite	3, 6
2	sericitized silicified quartz-phyric dacite	7, 8
2	argillized dacite	9, 10
3	slightly propylitized volcarenite	
1	explosive vent breccia, fragments of quartz-phyric dacite, disseminated pyrite > galena, sphalerite. Low-grade (bulk) Au (1.5-3 g/t Au)	12-20