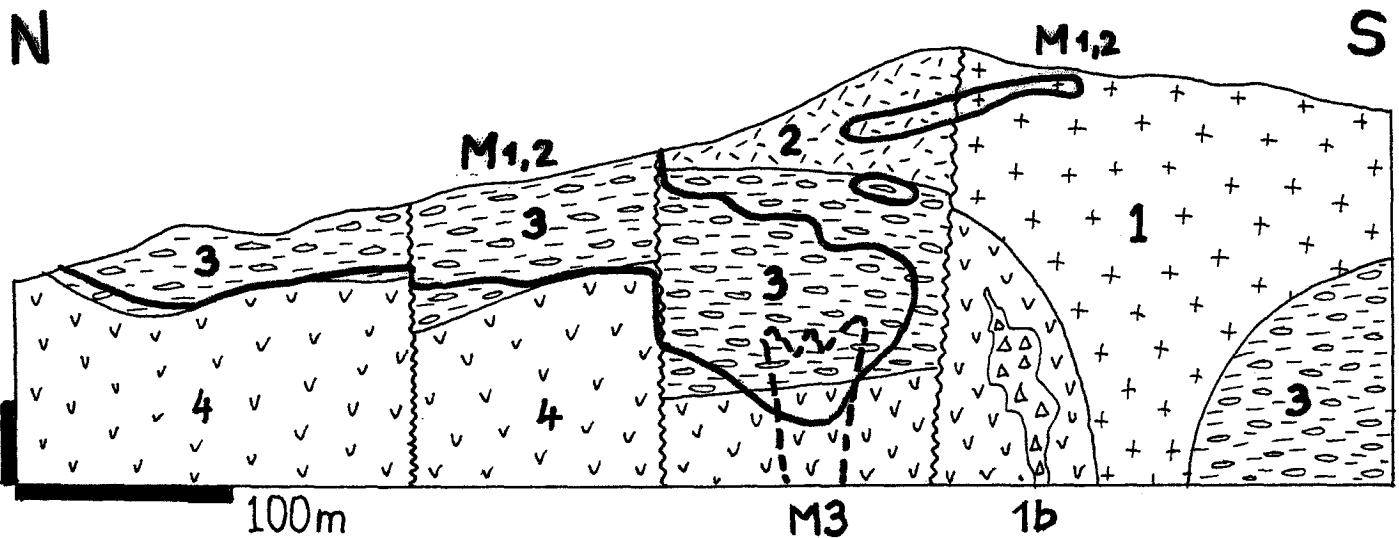


## 2496 PIERINA (Huaraz) Au-Ag 5: host lithology



Pierina cross-section; Laznicka (2000) after Volkert et al. (1999)

## LT 2496 LEGEND

Unit No	Unit Description
M1	Mi-Pl dispersed (invisible) gold in Fe oxides, quartz, relict pyrite in hypogene oxidized, previously quartz-alunite altered (acid sulfate alteration) porous residual vuggy silica after rhyodacite pyroclastics >> andesite
M2	14.7 Ma; relicts of earlier mineralization stage preserved as kernels in M1: vuggy silica with alunite, native sulfur, pyrite, enargite, covellite, younger barite; variable but mainly low Au content
M3	Sulfides in presumed fluid feeder structure in the footwall: veins and mineralized fractures with pyrite, enargite, sfalerite in fractured silicified tuff
	<b>Lithology is shown without superimposed hydrothermal alteration</b>
1	Mi quartz-feldspar porphyry subvolcanic intrusion dome
1b	Diatreme and other breccias (shown diagrammatically in the section); laminated tuff or volcanic sediment, a maar deposit ?
2	Mi rhyodacite lithic tuff
3	Mi rhyodacite pumice tuff
4	Eo-Mi Calipuy Volcanics; andesite lavas, pyroclastics, volcanoclastics intruded by small subvolcanic domes

## LT 2496 SAMPLE DESCRIPTION

Unit No	Sample Description	Sample No
1	Quartz-feldspar porphyry	1,2
1b	Laminated volcanic sediments, some calcareous ("travertine"); a maar lacustrine fill ? Diatreme breccias: quartz-sericite-clay and propylitic alterations, respectively	4-7 8,9
3	Pumice tuff, advanced argillic alteration	10
4	"Upper Andesite", unaltered	11,12
4	"Lower Volcanics", andesite flows and tuff breccias: --clay, chlorite alteration (zoned in respect to the ore zone) --slight areal propylitization	13,14 15-18