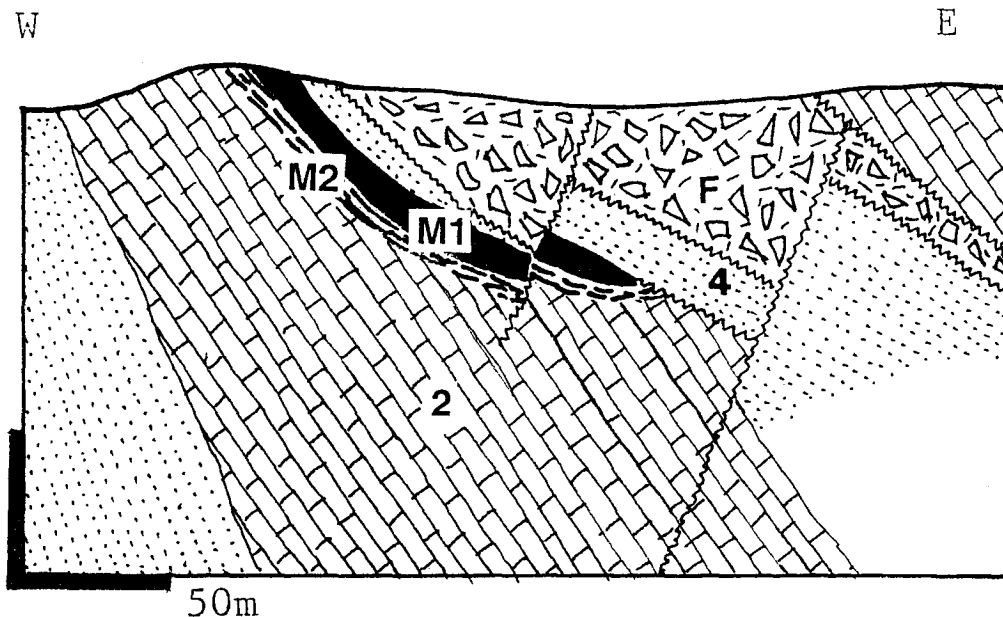


**2702 PUTTAPA (Beltana) willemite 2, Copley area-Zn**



Puttapa cross-section; from Laznicka (1993), modified after Horn (1975)

**LT 2702 LEGEND**

Unit No	Unit Description
M	Three irregular bodies of aphanitic, brecciated, hematite-pigmented willemite with bands, veinlets, breccia cement of white metacolloform willemite and calcite, replacing and infilling tectonic blocks of dolomitized Ajax Limestone; breccia-cementing and fracture-coating later stage Pb-Zn arsenates (hedyphane, mimetite, etc.) and Mn hydro-oxides with Pb (coronadite) M1 high-grade willemite ore M2 lower-grade Zn,Pb,Mn enriched hematitic breccia
F	Np heterolithologic diapir breccia filled by rocks of the Callana Group (shale, halite-casted siltstone, quartzite, dolomite, rare dolerite) in carbonate-clay matrix
A	Altered and recrystallized host rocks: dolomitized + hematite-pigmented limestone breccia; silicified carbonates (jasperoid)
2	Cm1 Hawker Group, carbonates (Ajax Limestone)
4	Np-Cm1 (~590-540 Ma) Wilpena Group, Pound Subgroup: quartzite

**LT 2702 SAMPLE DESCRIPTION (collected by Alan Goode, AMIRA, assembled by Peter Laznicka, 2001, 2002)**

Unit No	Sample Description	Sample No
M1	White crystalline willemite	1-4
M2	White crystalline willemite veining siliceous hematitic dolomite breccia Coronadite and cryptomelane-hollandite	5-11 12-15
2	Hematite-pigmented recrystallized Ajax Dolomite	16-18
4	Pound Quartzite and quartzite breccia	19, 20