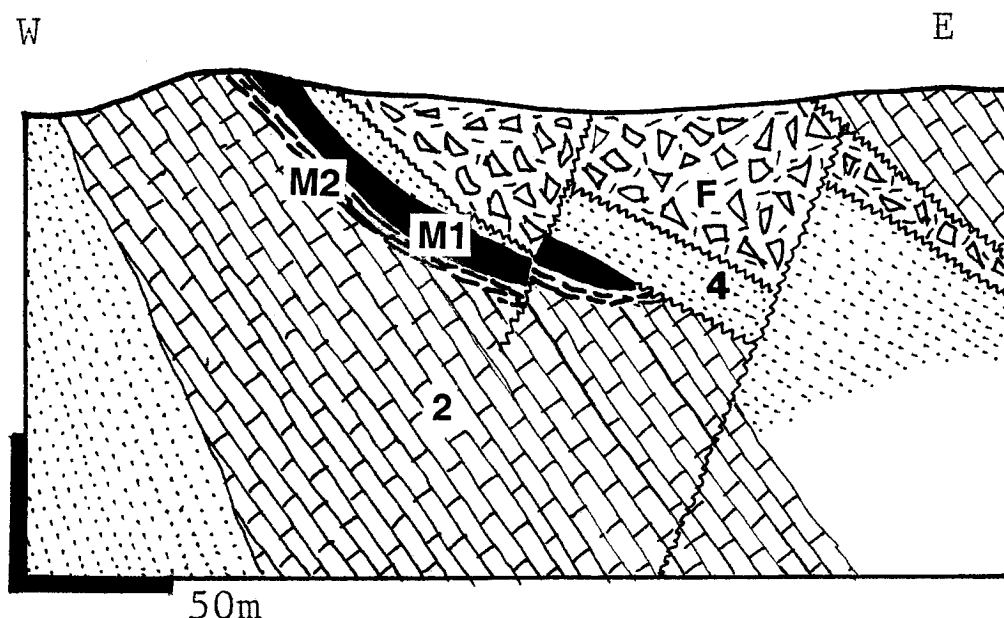


1284 PUTTAPA (Beltana) willemite deposit-Zn, Copley area

Puttapa cross-section; from Laznicka (1993), modified after Horn (1975)

LT 1284 LEGEND

Unit No	Unit Description
M	Three irregular bodies of aphanitic, brecciated, hematite-pigmented willemite with bands, veinlets, breccia cement of white metacolloform willemite and calcite, replacing and infilling tectonic blocks of dolomitized Ajax Limestone; breccia-cementing and fracture-coating later stage Pb-Zn arsenates (hedyphane, mimetite, etc.) and Mn hydro-oxides with Pb (coronadite) M1 high-grade willemite ore M2 lower-grade Zn,Pb,Mn enriched hematitic breccia
F	Np heterolithologic diapir breccia filled by rocks of the Callana Group (shale, halite-casted siltstone, quartzite, dolomite, rare dolerite) in carbonate-clay matrix
A	Altered and recrystallized host rocks: dolomitized + hematite-pigmented limestone breccia; silicified carbonates (jasperoid)
2	Cm1 Hawker Group, carbonates (Ajax Limestone)
4	Np-Cm1 (~590-540 Ma) Wilpena Group, Pound Subgroup: quartzite

LT 1284 SAMPLE DESCRIPTION (collected and assembled by Peter Laznicka, 1981)

Unit No	Sample Description	Sample No
M1	Banded red (hematitic)/white willemite	8-10
	White metacolloform crystalline willemite	12-16
	Pb,Zn arsenates: hedyphane, mimetite (yellow powdery)	17
	Coronadite	11
M2	Barren siliceous goethitic gossan breccia	3
	Mn-rich residuum after Ajax Dolomite solution removal	4
	Hematitic breccia	5
	Strongly hematitic willemite ore	6, 7
F	Siltstone fragment from diapiric breccia	20
2	Hematite-pigmented and standard Ajax Dolomite	18, 19
4	Pound Quartzite and quartzite breccia	1, 2