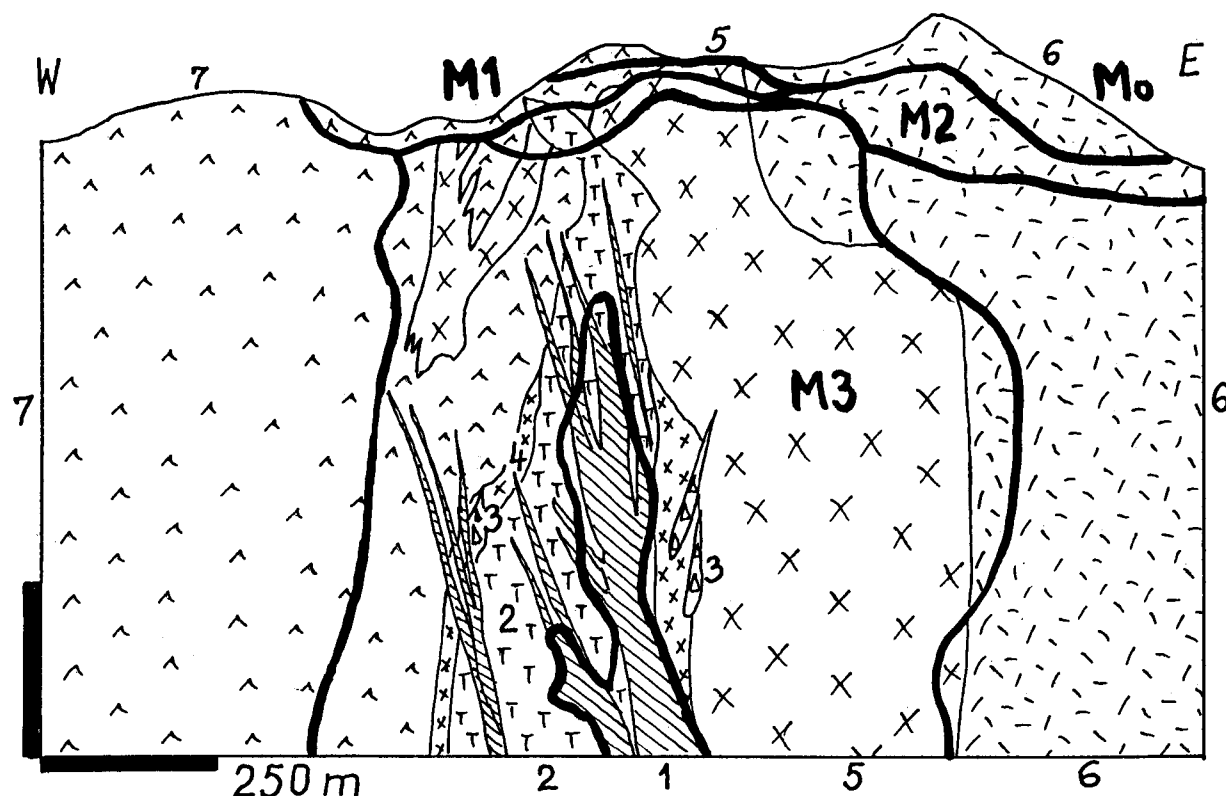


2465 BATU HIJAU 2: chalcocite & hypogene zones-Cu,Au

Cross section modified after Clode et al. (1999); orebody outline based on 0.3% Cu cutoff

LT 2465 LEGEND

Unit No	Unit Description
Mo	Leached capping over the orebody
M1	Oxidation zone and transition: chrysocolla, malachite > brochantite
M2	Chalcocite (pyrite) zone
M3	Hypogene chalcopyrite, bornite, magnetite (quartz) fracture veinlets, disseminations, breccia fill in biotite-altered hosts
1	PI (4.4-3.8) Young tonalite porphyry
2	Mi3-PI (4-5 Ma) Intermediate tonalite porphyry
3	Intrusion breccia: fragments of older tonalite or andesite, altered & sometimes mineralized, in tonalite porphyries
4	Mi3 (6-5 Ma) Old tonalite porphyry
5	Mi Equigranular (quartz) diorite
6	Mi Quartz diorite porphyry
7	Mi2 (15 Ma ?) andesite volcanic sequence: flows, pyroclastics, volcanoclastics, minor limestone; regionally propylitized, thermally recrystallized, hydrothermally altered

LT 2465 SAMPLE DESCRIPTION (collected & assembled by Peter Laznicka, 2000)

Unit No	Sample Description	Sample No
M2/5	Chalcocite disseminated & on fractures in "mafic altered" diorite	1-6
M2/2	Ditto, in Intermediate tonalite	7,8
M2-3/2	Transition, chalcopyrite & bornite on fractures in sericitically altered Intermediate tonalite	9-14
M3/7	Vuggy quartz veining in altered andesite	15,16
M3/7	Quartz, specularite, chalcopyrite, fracture veinlets in altered volcanics	17-19
M3/7	Fracture & disseminated chalcopyrite, magnetite in volcanics	20